

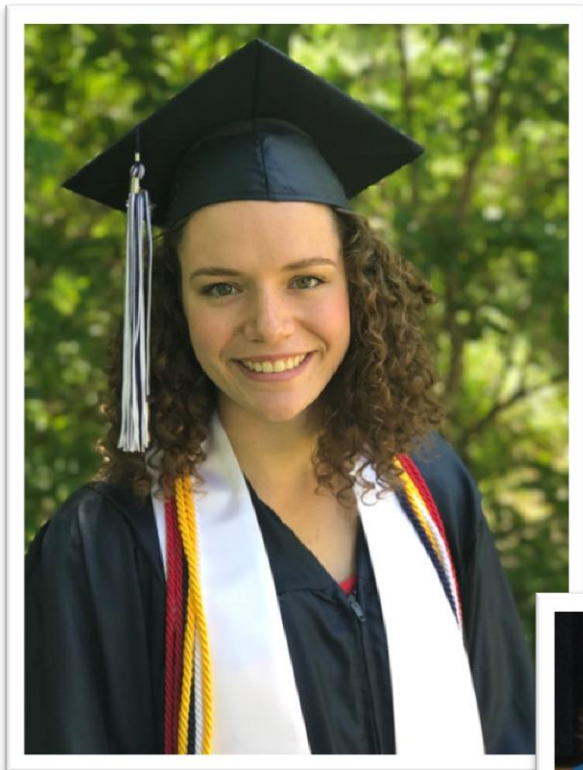
Bike to School Day

Kelly Wichmann has been a Girl Scout for 14 years as a member of Troop 7189 in Service Unit 704. She is currently a freshman at St. Olaf College studying biology and mathematics.

Kelly's Gold Award project addressed the issue of carbon pollution caused by car transportation to her local high school and the issue of limited student physical activity. After noticing an overflowing school parking lot, Kelly found a solution that paired with her passion for biking. By establishing a "bike to school day" program and improving the bike rack at the school to accommodate more bikes, Kelly hopes to improve health, decrease strain on the parking lot and reduce the carbon footprint of the school. In addition to the health and environmental benefits, Kelly's project will educate her fellow students on pollution and encourage them to be more ecofriendly.

Kelly worked with Manhattan High School faculty, student clubs and her family to gather supplies, plan logistics and host the Bike to School program. By having volunteers help her renovate the bike rack, she was able to provide a place for students to put their bikes during the day and hopefully reducing the number of cars in the parking lot. On a global scale, every student that bikes helps reduce harmful carbon emissions and creates a healthier, more physically fit population. Through innovative thinking, Kelly has been able to establish a project that will be replicated at her high school and encourage a more eco-friendly, healthier Manhattan High School.

Because of Girl Scouts... I believe in girls supporting girls, I have become a passionate and self-motivated leader, and I know that I can (and will) achieve my goals.



Kelly Wichmann

Manhattan, Kansas

