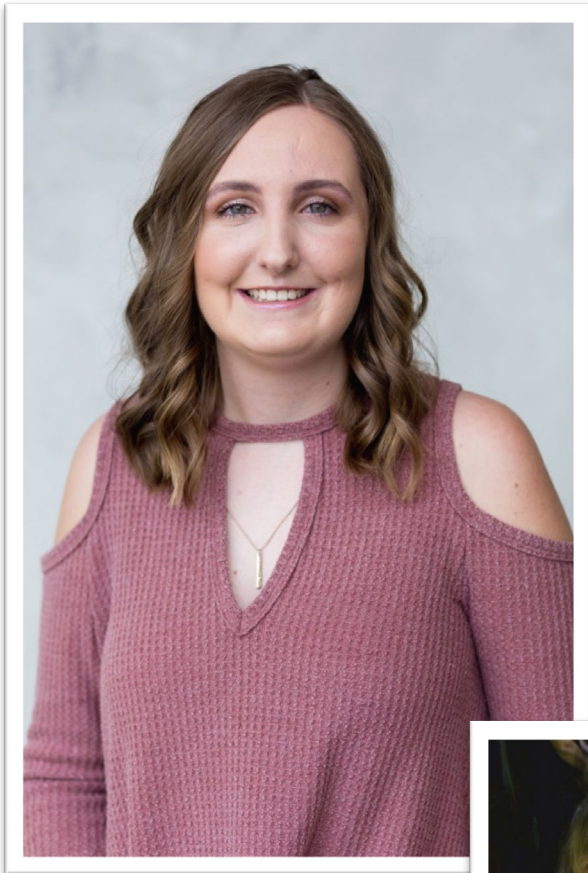
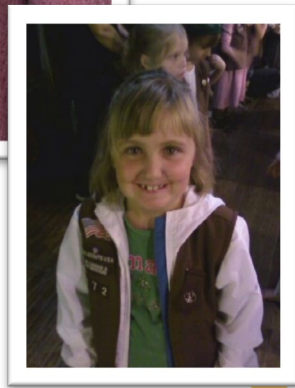


## Wayside Waifs Walking Trails Garden



**Emma Govreau**

Overland Park, Kansas



Emma Govreau has been a Girl Scout for 11 years and is in Troop 146 in Service Unit 679. She is currently a junior at Olathe North High School.

Emma's Gold Award project addressed a need for beautification of walking paths at a local animal rescue, Wayside Waifs. To encourage volunteers to continue to walk shelter dogs at Wayside Waifs, the non-profit felt it needed to beautify the trails and make them more appealing for dogs and human volunteer walkers. Emma researched ways to make the walkways more appealing, asked for input from the staff and created a garden design that she implemented. By creating a garden that is inviting and beautiful, she hopes that volunteers will continue to walk dogs in the area and help homeless animals receive critical socializing and exercise time with human companions.

Emma worked with Wayside Waifs, local home supply stores and her family to create the project plan, gather donations and provide labor to create the garden. Thanks to her enhancements to the space, volunteers are able to enjoy long walks with shelter pets and this socialization helps the animals have a better chance at adoption. Emma also created a booklet that will help maintain the garden for years to come, ensuring it has lasting impact on the shelter. By beautifying the walking trails, Emma is helping dogs find new homes and providing a positive experience for future volunteers!

**Because of Girl Scouts, I have gained leadership skills and made many new friends. I have enjoyed doing lots of outdoor activities and being a leader at day camp.**