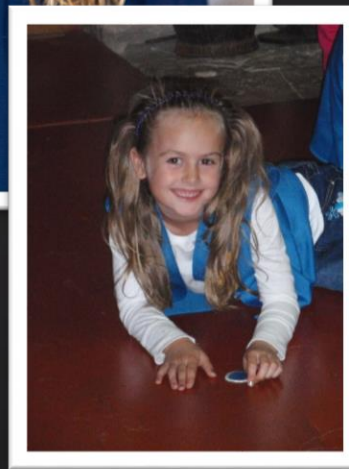
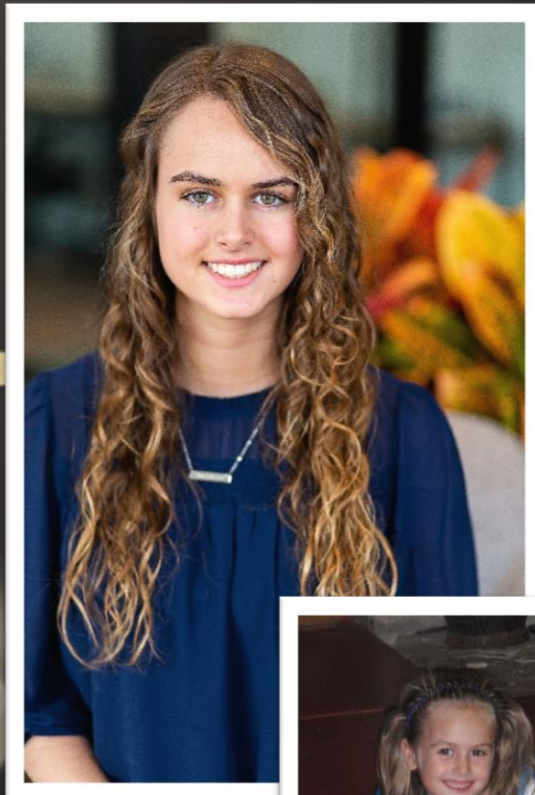




Shelby Goscha

Manhattan, KS



Monarch Waystation

Shelby Goscha has been a Girl Scout for 12 years as a member of Troop 1221 in Service Unit 704. She is currently a senior at Manhattan High School.

Shelby's Gold Award project addressed a lack of locations for butterflies to feed while migrating south, which has created a decline in the overall butterfly population. By establishing a butterfly garden, Shelby was able to provide a safe place for butterflies to feed, rest and restore their energy before continuing their migration path. This is important for the ecosystem as butterflies and other insects are pollinators and help plants reproduce. The garden is not only beneficial for the insects, it provides the community a place to relax, enjoy nature and learn more about pollinators like bees and butterflies.

Shelby worked with Tuttle Creek Lake Association, OK Kids Day and her Girl Scout troop to build the garden and help maintain it going forward. The garden will also be maintained by Tuttle Creek State Park team. She also educated children on the importance of butterflies to the ecosystem with a booth at OK Kids Day. During this project, she faced obstacles with the great outdoors including snake encounters while building the garden and challenges with the weather. Shelby has created a lasting impact on her community by helping rebuild the butterfly population and a beautiful place for residents to enjoy.

Because of Girl Scouts... I have learned valuable leadership skills, the value of teamwork, and been given many great opportunities to improve my character. Girl Scout has helped me to make lifelong friends and leave a lasting impact on my community.